

SALDATRICI DC - 2 Poli

DC WELDERS - 2 Poles

WS DC

In corrente continua (Alternatore monofase a spazzole)

Direct Current (Single-phase Brush Alternator)

WS TDC

In corrente continua (Alternatore trifase a spazzole)

Direct Current (Three-phase Brush Alternator)



Caratteristiche tecniche
WS DC-TDC
La saldatrice è provvista di protezione termica autoripristinabile contro i sovraccarichi. Il selettore a 8x2 posizioni (8x3 con WS 240DC e WS 240TDC) permette di variare la corrente di saldatura.
Classe d'isolamento H
Protezione IP 23
T.H.D. ≤ 6%
Tensione d'innesco 65÷85V
Elettrodi utilizzabili tutti, inclusi basici e cellulosici
Optional Quadro elettrico, Carica batterie

Technical characteristics
WS DC-TDC
The welder is provided with an autoresettable thermal breaker against overload. The 8x2 position (8x3 with WS 240DC and WS 240TDC) selector allows to change the welding current.
Insulation class H
Protection IP 23
T.H.D. ≤ 6%
Strike voltage 65÷85V
Compatible electrodes all types, included basic and cellulosic
Optional Electrical panel, Battery charger

Modello Model	Servizio Duty	Corrente saldatrice Welding Current	>	Potenza assorbita Driving Power	Alternatore Alternator		Peso Weight			Taglia Size
					1 ph cosφ 1 [kVA]	3 ph cosφ 0,8 [kVA]	cone	B34	SAE	
							[kg]	[kg]	[kg]	
50Hz - 3000rpm										
WS 180DC	140A - 60% 180A - 35%	140A (ø=3,25mm) 180A (ø=4mm)	>	6,0kW (8HP) 7,5kW (10HP)	3,0	---	33,0	34,5	36,5	S
WS 200DC	170A - 60% 200A - 35%	170A (ø=4mm) 200A (ø=5mm)	>	7,0kW (9,5HP) 9,0kW (12HP)	4,0	---	45,0	46,5	48,5	L
WS 220DC	170A - 60% 220A - 35%	170A (ø=4mm) 220A (ø=5mm)	>	7,0kW (9,5HP) 9,0kW (12HP)	4,5	---	45,0	46,5	48,5	L
WS 220TDC	170A - 60% 220A - 35%	170A (ø=4mm) 220A (ø=5mm)	>	7,0kW (9,5HP) 9,0kW (12HP)	3,5	6,5	45,0	46,5	48,5	L
60Hz - 3600rpm										
WS 200DC	150A - 60% 200A - 35%	150A (ø=4mm) 200A (ø=4mm)	>	6,3kW (8,5HP) 8,0kW (11HP)	3,4	---	35,0	36,5	38,5	S
WS 210DC	180A - 60% 210A - 35%	180A (ø=4mm) 210A (ø=5mm)	>	7,5kW (10HP) 8,7kW (11,8HP)	4,5	---	45,0	46,5	48,5	L
WS 240DC	200A - 60% 240A - 35%	200A (ø=5mm) 240A (ø=5mm)	>	8,5kW (11,5HP) 11,0kW (15HP)	5,0	---	45,0	46,5	48,5	L
WS 240TDC	200A - 60% 240A - 35%	200A (ø=5mm) 240A (ø=5mm)	>	8,5kW (11,5HP) 11,0kW (15HP)	4,0	7,0	45,0	46,5	48,5	L

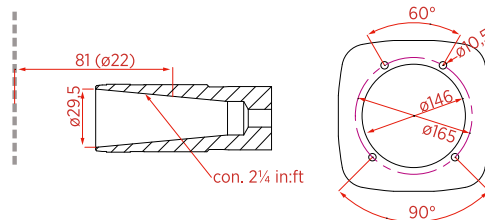
Dimensioni di ingombro

Overall Dimensions

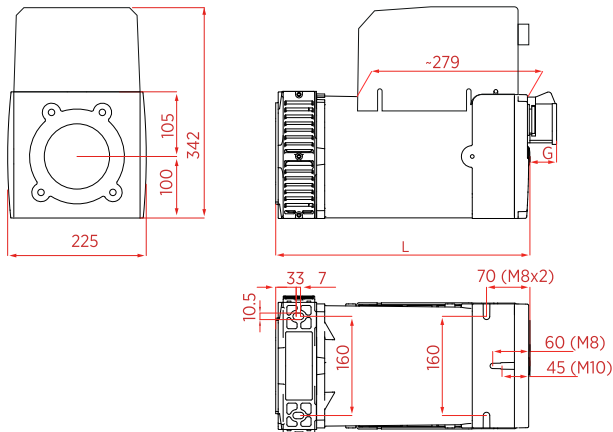
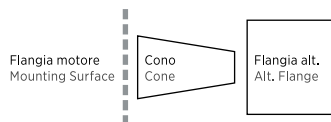
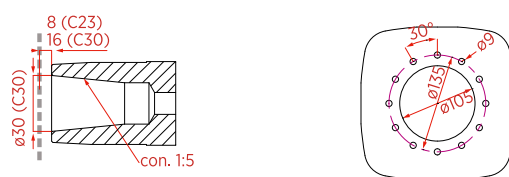
CONE

J609b

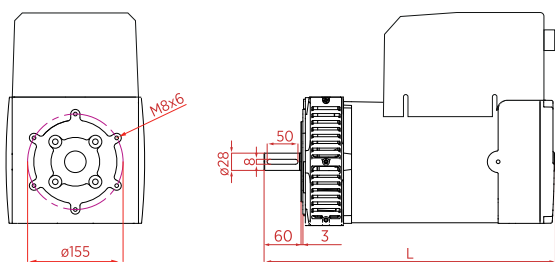
C 22
C 25,4
C 35



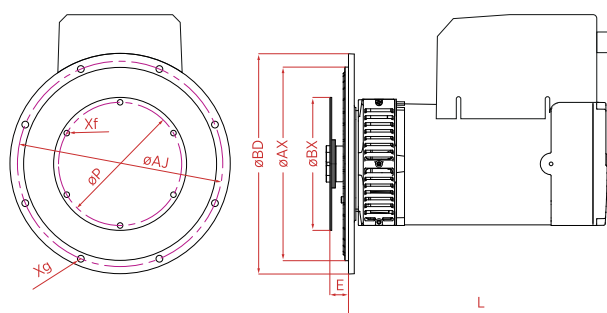
C 23 C 30



B34



SAE



SAE	Flangia Flange			
	ØBD	ØAX	ØAJ	Xf
	[mm]			
5	358	314,33	333,4	Ø11 (8)
4	405	361,95	381,0	Ø11 (12)

SAE	Giunto Joint			
	ØBX	ØP	E	Xg
	[mm]			
6,5	215,9	200,02	30,2	Ø9 (6)
7,5	241,3	222,25	30,2	Ø9 (8)

WS DC Size S	cone		
	B34	SAE	L
	[mm]		
WS DC Size S	345	408	357
WS DC-TDC Size L	410	473	422

Prese Sockets	G
	[mm]
Schuko	13
CEE 16A	55
CEE 32A	67
NEMA	1

Dati tecnici non impegnativi: NSM si riserva il diritto di apportare modifiche senza l'obbligo di darne preventiva comunicazione. Technical data not binding: NSM reserves the right to modify the contents without prior notice.